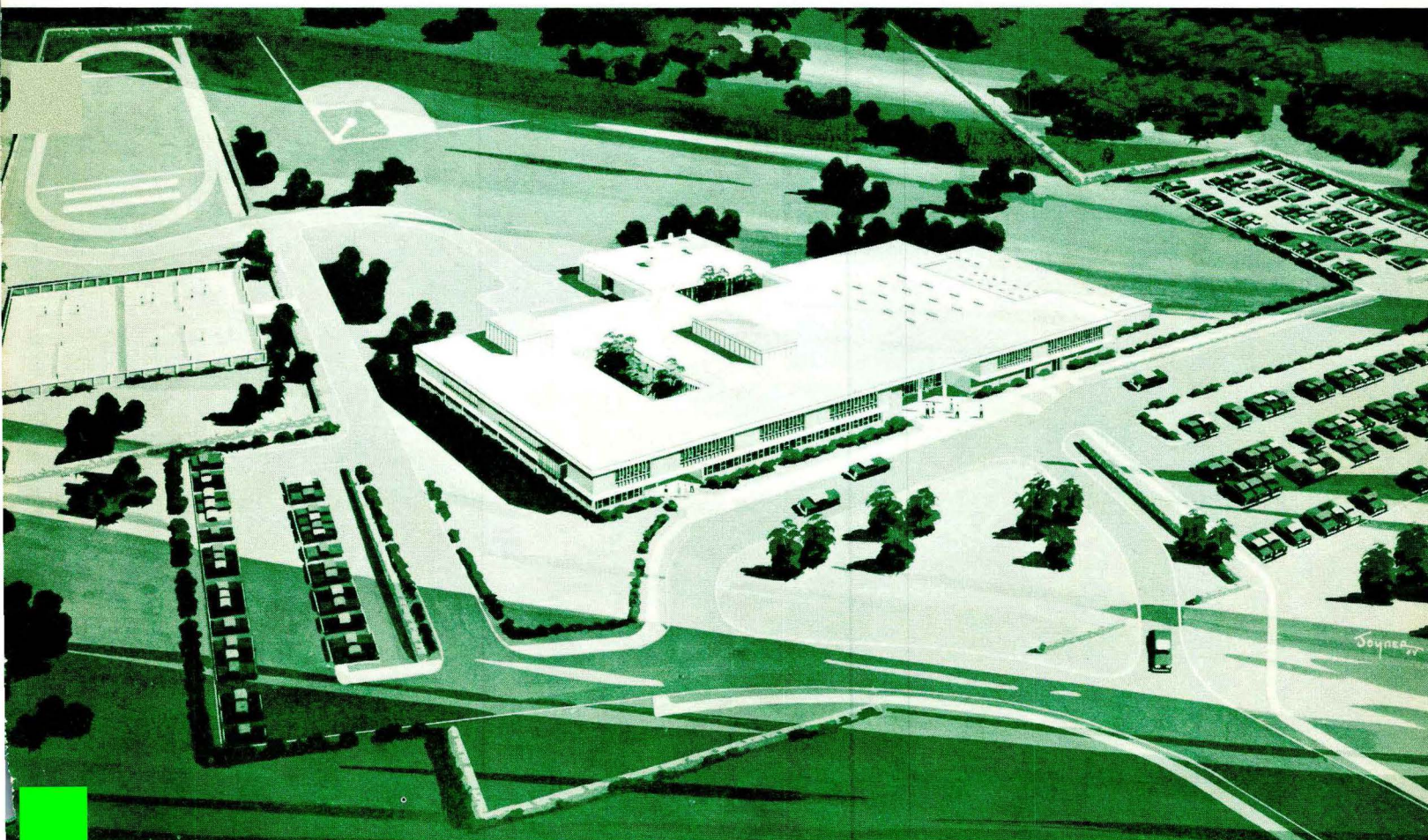


A PROGRESS REPORT
from the
BOARD OF EDUCATION
NORTHERN HIGHLANDS REGIONAL HIGH SCHOOL

Allendale and Upper Saddle River, New Jersey

July, 1964



To the Residents of Allendale and Upper Saddle River

The voters of Allendale and Upper Saddle River approved the site acquisition and building program for the Northern Highlands Regional High School on May 24th, 1963. The following is a report of the present status of the program.

The numerous obstacles encountered in planning and starting a new school have been surmounted and final plans and specifications for the building have been approved by the State Department of Education.

We have received favorable bids on the five contracts, and have awarded contracts to the lowest bidders. In addition, we have advertised for and received bids on our \$3,650,000. bond issue and have sold the bonds at a favorable rate of interest.

We are pleased to report that ground was broken a few weeks ago and we are at last fully under way. Although the Board is not happy with the many delays which have resulted in a tight building schedule, we are advised by our Architect and contractor that the schedule is realistic, and that we will occupy the building by September, 1965.

Your Board members wish to assure you that they will continue to pursue every possible means of providing proper facilities for the high school students of Allendale and Upper Saddle River in September, 1965.



NORTHERN HIGHLANDS REGIONAL HIGH SCHOOL DISTRICT BOARD OF EDUCATION

William G. Donaldson
Allendale

Mrs. Esther M. Kanning
Allendale

E. Robert Kiehl
Allendale

Heinz M. Lintermann
Upper Saddle River

Leo F. McKenney
Upper Saddle River

Dean A. Moore
Upper Saddle River

Jack A. Peyman
Upper Saddle River

William A. B. Simpson
Allendale

George H. Wolfson
Allendale

SITE

The 40-acre Hillside Avenue site, which was approved by the voters of the region on May 24, 1963, was acquired by the Board in September, 1963.

Site layouts were reviewed and revised in several meetings with members of the Board and a Citizens Advisory Committee, including the Director of Health, Safety and Physical Education of the State Department of Education.

The final layout includes:

1. The school building, located on the south central section of the property, facing Hillside Avenue. Roadways lead to the building from Hillside Avenue and from East Elbrook Drive. Parking areas will be located in front of the school and on the east side of the school.
2. A standard football field surrounded by a standard quarter-mile track with a 220-yard straight away, both to be located in the northwest sector of the property.
3. A baseball diamond to be located east of the football field directly behind the school building.
4. Boys' and girls' playfield areas for physical education classes and general sports activities to be located at the north central and east sections of the property.

NOTE: Tennis courts were included in the bidding as an alternate, and were omitted by the Board because of cost. It is hoped that the tennis courts will be added in the future.

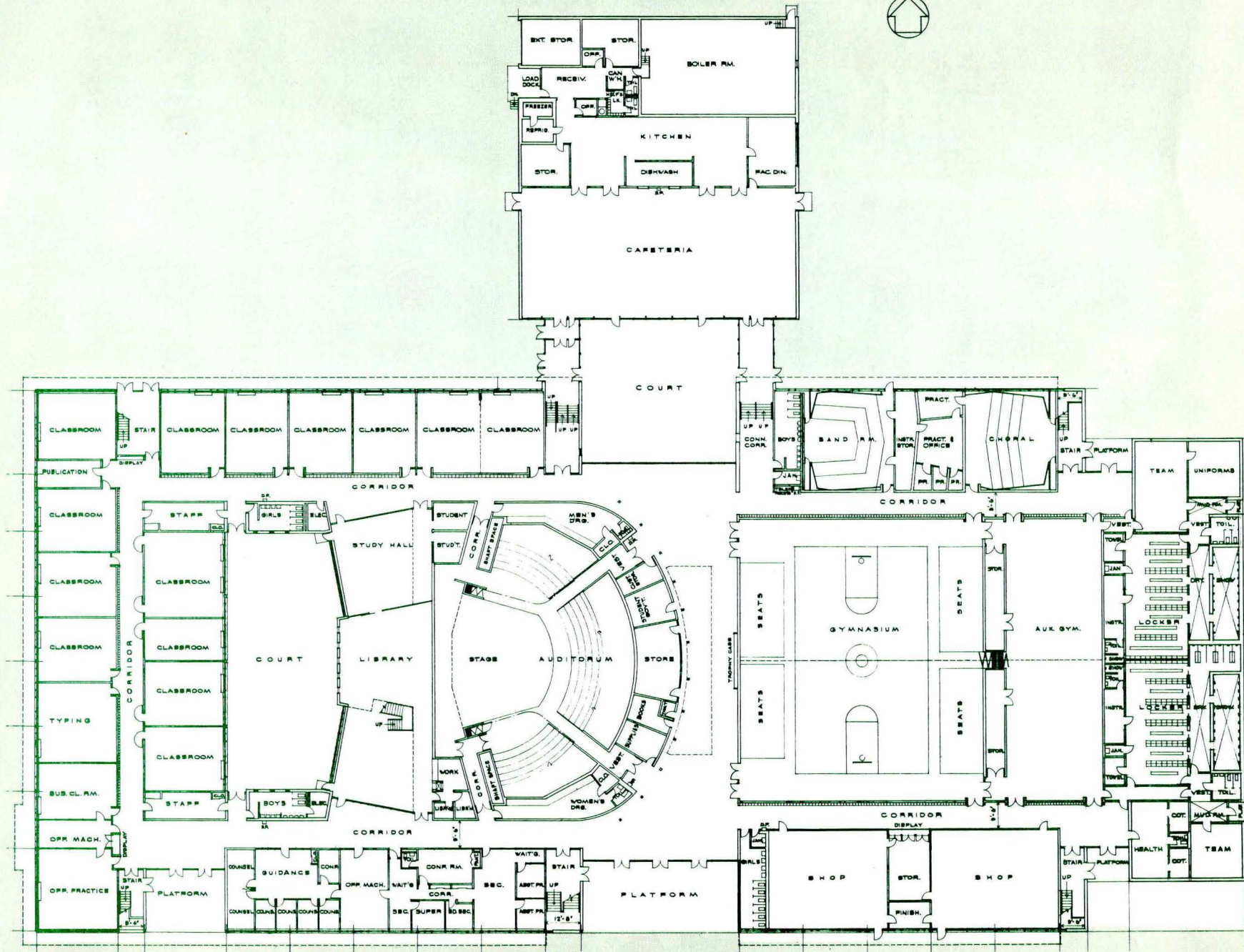
BUILDING

During the preparation of working drawings and specifications for the proposed building, several changes were made from the floor plans shown in the brochure published prior to the referendum of May 24, 1963. These changes in general were made either to permit more efficient use of space or to lower construction cost. All were approved by appropriate state agencies, frequently after consultation between superintendent, architect, and agency representative, and none reduces facilities or represents any great deviation from the plans given preliminary approval by the State Board of Education. The more important of the changes are:

1. The two-story areas adjoining the east side of the gym, originally containing boys' and girls' locker rooms and 2 auxiliary gyms, have been revised to a one-story portion twice as wide. The change keeps these spaces at ground level and facilitates access to outside playing and recreational fields, and meets the state building code.
2. The auditorium and associated areas have been modified in outline, and there have been some reassignments of space without, however, any change in usable area except for the lobby areas between the auditorium and gym.
3. In the cafeteria an unobstructed eating area has been obtained by moving the serving area into the kitchen from its original position as a projecting island.
4. Although the general design of the building is unchanged, the roof and second floor overhangs have been reduced to obtain construction economies and best utilization of space.

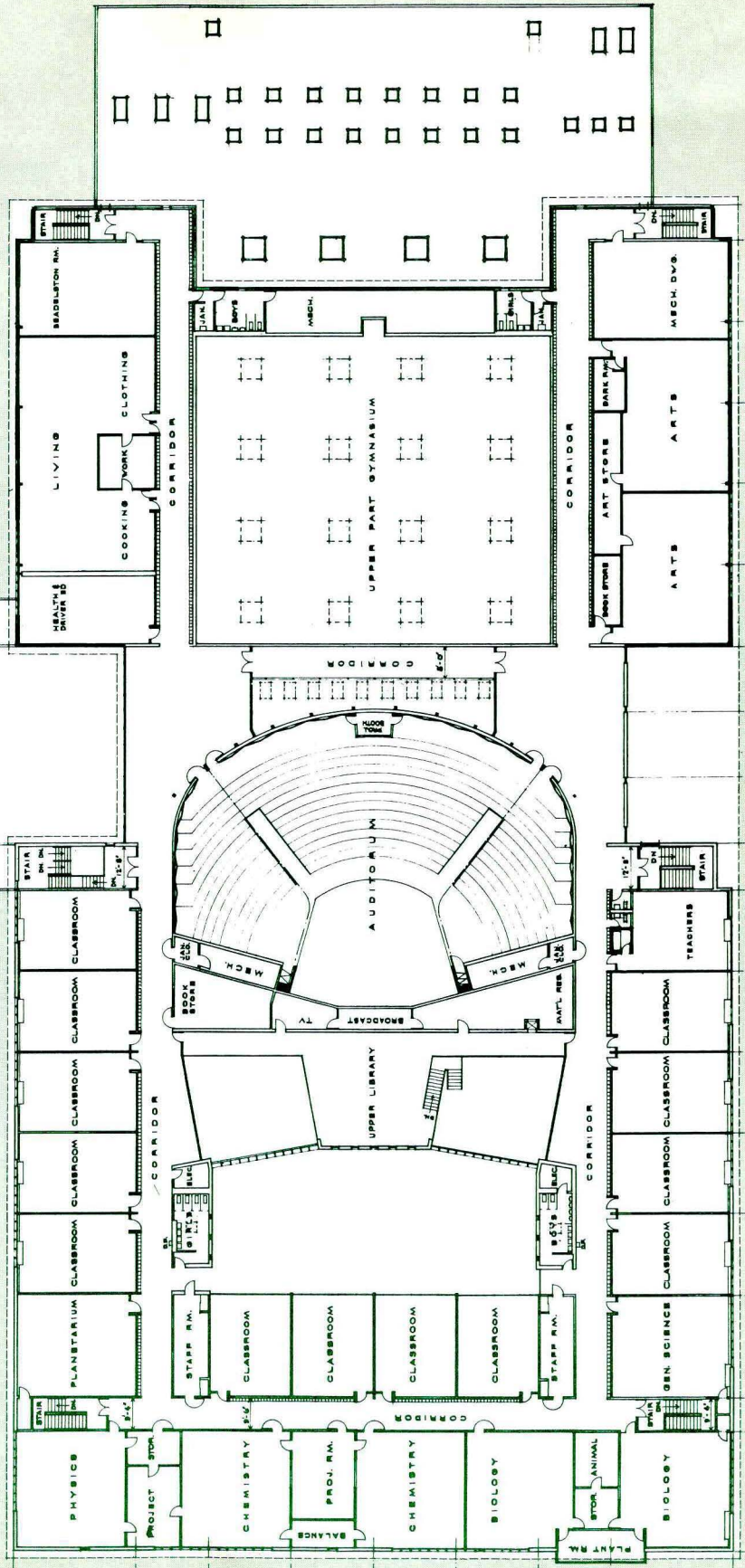
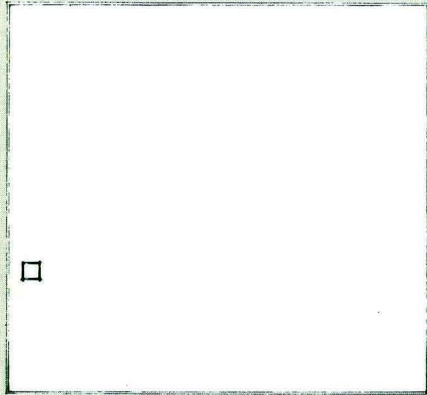
NOTE: Cost considerations may dictate that we omit all folding doors. However, except in the case of the auditorium, tracks will be installed so that doors may be added in the future.

PLAN NORTH



FIRST FLOOR PLAN

PLAN NORTH



SECOND FLOOR PLAN

EQUIPMENT

The major cost of the new high school is of course the construction of the building, the associated site work and installation of built-in or fixed equipment. Services of the Architect include preparation of working drawings and specifications for these items, and professional assistance and recommendations in regard to the bids received, followed by supervision during actual construction. The fee paid to the Architect is set by the total of the bids for which responsibility is assumed.

To reduce the Architect's fee, the Board has prepared specifications which remove from the contracts under his supervision items which past experience has shown can safely be provided by the owner without incurring undue risk of installation difficulties.

The following are sources of savings designated in the specifications as owner-supplied:

Appliances — Home Arts Room	Seating — Auditorium
Stacks — Library	Rigging, Curtaining — Stage
Score Board — Gymnasium	Playfield Equipment
Equipment — Shops	Indoor & Outdoor Bleachers

Quotations for the above will follow the procedure for the construction bids, and separate contracts will be awarded.

CAPITAL BUDGET

New Jersey Law requires bidding on a public school in five separate contracts. The Board received bids on April 29, 1964 and awarded contracts to the lowest bidder in each category.

The contracts awarded were:

A. A. LaFountain — General Contractor	\$1,780,685.00
Schacht Steel Construction Co. — Structural Steel	281,900.00
Herman Braun, Inc. — Plumbing	182,208.00
R. G. Maupai, Inc. — Heating and Ventilating	351,880.00
Busch Bros., Inc. — Electrical	274,859.00
SUB-TOTAL	\$2,871,532.00

A balance of \$778,468.00, is committed as follows:

Architect's Fees	\$ 184,000.00
Site Purchase	221,000.00
Legal and Miscellaneous Fees (Including Clerk of the Works' Salary)	40,000.00
Equipment	300,000.00
Contingency	33,468.00
TOTAL	<hr/> \$3,650,000.00

BOND ISSUE

Preliminary to the advertisement of the sale of bonds, the Board prepared a brochure which was submitted to Moody's Investors Service and Standard and Poor's to secure a financial rating for the Northern Highlands Regional High School District. The Board was notified by Moody's that the District had received an A rating.

On May 25, 1964, the Board received bids on the \$3,650,000.00 issue and awarded the sale to People's Trust Company in Hackensack, with a low rate of 3.30%. In earlier budget projections, we had used an estimated rate of 4%.

PLANS FOR OPENING

The Board's present plans are to open with grades 9, 10, and 11 from both communities, permitting the seniors to finish their secondary education at Mahwah.

We have been assured by our Architect and general contractor that barring unforeseen developments, we should be able to open the school in September, 1965. The Board and Administration are working actively on the educational preliminaries to the opening of school. To this end, a Director of Guidance, Mr. Robert B. Pollack, has been engaged to start work this summer. Mr. Pollack is presently employed as a Director of Guidance at Kinnelon High School, Kinnelon, New Jersey.



BOARD OF EDUCATION
NORTHERN HIGHLANDS REGIONAL
HIGH SCHOOL DISTRICT
Allendale, N. J.

Non-Profit Organization
U. S. Postage

PAID

Allendale, New Jersey
Permit No. 4

INFORMATION ON:

Site
Building
Equipment
Capital Budget
Bond Issue
Plans for Opening

Occupant
90 Allen St.
Allendale, N.J.