

ALLENDALE HISTORY AND HERITAGE

VOL.25, NO. 2

Spring 1999

ISSN 1071-2305

SOCIETY NEWS

Since the publishing of our last newsletter, our president has resigned; and Judy McKim, our vice president is now serving as president.

The office of vice president remains unfilled as of our business meeting of April 7.

Newsletter staff has had some changes as well. Judy McKim will serve as editor, and Lynn Novak will be in charge of layout.

Lynn Novak has agreed to the task of layout of the newsletter due to her husband's offer to do most of this work at his job. Stephen works for Montage Media Corporation and we thank Montage Media and Stephen wholeheartedly for this service.

The scholarship fund established to honor Pat Wardell has collected \$450. Thank you, members, for your donations.

For those Society members out of the Allendale area, I'm happy to report that The Town Journal ran the article about Pat Wardell that appeared in the Society's last newsletter. *✎ - Judy McKim*

General Meeting
of the
Allendale Historical Society
"Allendale History Fair"

Wednesday
May 5, 1999
8 p.m.
at
Boro Hall
Council Chambers
2nd Floor

ALLENDALE HOUSES BUILT BEFORE 1940

Pat Wardell's "inventory" of pre-1940 Allendale houses uses information from the Society's files as well as Pat's own files. Very few of the houses have been systematically researched, so we know that for most of them, the information is incomplete. We would welcome any additions, corrections, updating, etc. from our readers, and will happily add such information to the Society's files.

Only houses still in existence today are included in this inventory. Houses are generally named for the earliest known owner/occupant. Names associated with a house are not necessarily always owners; some may have been tenants. Also, not all owners actually lived in houses they owned; some houses were leased for rental income. The houses are listed alphabetically by street names, then numerically by house number. ☞

KEMP HOUSE

Block 404, Lot 23 (Old Block 44, Lot 23 & 30)
Built about 1910.

Joseph S. G. Kemp, ?-1935.

Joseph S. G. Kemp and Elizabeth B. Kemp, later only Elizabeth B. Kemp, widow, 1935-1971.

Peter M. Guilfoyle and Catherine C. Guilfoyle, 1971-?

The 1940 Borough Tax Appraisal Sheet describes the house as a 2-story, 1 family house. It had a clapboard exterior. It had a detached garage. The house contained 6 rooms, and 3 bedrooms. The fair market value was \$4,750.



Kemp House, 801 Franklin Turnpike

STRAUT-RAPELJE HOUSE

Block 406, Lot 1 (Old Block 47, Lot 81)
Probably built before 1850.

"J. Straut" on 1860 Hopkins-Corey Map.

"Peter P. Rapelje" on 1876 Walker's Atlas Map.

"P. D. Rapelje" on 1887 Driving Chart.

"P. D. Rapelje" on 1902 Robinson Map.

"P. H. Rapelle" on 1913 Bromley Atlas.
Deyoe, 1940.

Foster C. Arnold, ?-c. 1960's.

Arnold, K. (1947-48 Bergen-Passaic Telephone Directory)

Frank J. Borin, Sr. and Josephine Borin, 1969-?

Burrows, John and Barbara (1985-86 Here's Allendale)



Straut-Rapelje House, 829 Franklin Turnpike

ALLENDALE HISTORY FAIR

Allendale Historical Society members are getting out their dust cloths and unpacking boxes. Individuals plan to share their personal collections of Allendale memorabilia.

On May 5, our general meeting will be in the form of a "fair." Members will bring their own individual Allendale history collections and display them. Also parts of Allendale Historical Society's own collection will be on display that evening.

We already have the promise of a complete collection of Brookside School yearbooks and Boy Scout memorabilia.

If you wish to share your Allendale memorabilia that evening, please come to the fair a little early to set up. Come to the fair, it promises to be a memorable evening! ☺

AND THE WINNERS ARE...

What a wonderful response to our Fall '98 Mystery Photo! Many of those who correctly identified the photo as the Winter Brothers' General Store had very fond and vivid memories of the store and its surroundings. Some people even tried to identify the car in the picture (Chet Misbouski's 1956 Buick or Nick DiGuittila's Pink/White car). One person identified Jack Grossman's father as taking the picture with a Polaroid in 1958.

Congratulations to Janice Colburn, Richard & Catherine Meginis, Arthur Albert, Roger Hampson, Helyn & Anthony Meyer, Francis Alslof, Jean Stein, Halyard Lane, Walter Hillman, David & Doris Berdan, JoAnn Helmer.

Short History - John Winter (b. Nov. 6, 1868) was married to Elizabeth Letson and lived on Maple Street. John was Mayor of Allendale in 1912 & 1913 and served as an Allendale Postmaster. He owned and ran a grocery/hardware store. The right side of the store was the Post Office. They had two sons (Herbert J - b. Aug 7 1894 & William Letson - b. Jan 12 1896) who later became partners and proprietors of the store, expanding it to include coal, feed and grain. Alongside the store were the trolley tracks that ran from Paterson to Suffern. Next to the tracks was the last house on Myrtle St. which belonged to "Doc" Schultz who used to cut hair in his living room during the 20s and 30s for \$.25. The porch on the General Store was usually very crowded on rainy days with girls and boys waiting for the bus to go to Ramsey high school or people waiting for the Trolley. I'm told that sometimes, if the bus was late, the High Schoolers took the Trolley to Paterson and skipped school. The store remained the Winter Brothers' Store until the early 1930s. ☺

SCHEDULE OF BUSINESS MEETINGS

September 8th, at 8 p.m.
Boro Hall, 2nd Floor

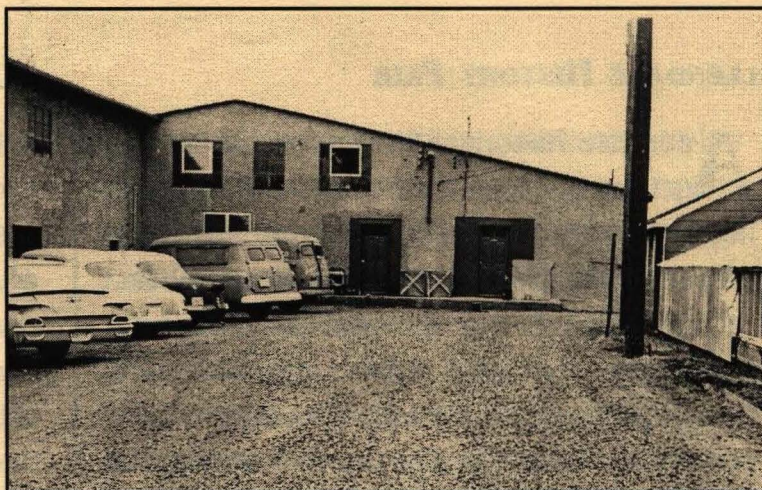
October 6th, at 8 p.m.
Boro Hall, 2nd Floor



Mystery Photograph

Tell us about this photo...

(Please print your name on your response.)



Allendale Historical Society Officers, 1998-1999

President: Judy McKim
Vice-President: vacant
Secretary: Ed Murray
Treasurer: Joanne Hart
Trustee: Tim Fenton

Newsletter Editor: Judy McKim
Newsletter Layout: Lynn and Stephen Novak
Newsletter Distribution: Tim Fenton and Joanne Hart

Allendale Historical Society P.O. Box 294, Allendale, NJ 07401

Annual Membership Dues: \$8.00 for membership from May through the following April.

The newsletter, **Allendale History and Heritage**, is published two times a year in the spring and fall, and mailed to members of the Allendale Historical Society.

Send information for inclusion in this newsletter to Judy McKim, 125 W. Orchard St., Allendale, NJ 07401

Allendale Historical Society
P.O. Box 294
Allendale, NJ 07401



FIRST CLASS MAIL

Lee Memorial Lib.
500 W. Crescent Ave
Allendale, NJ 07401