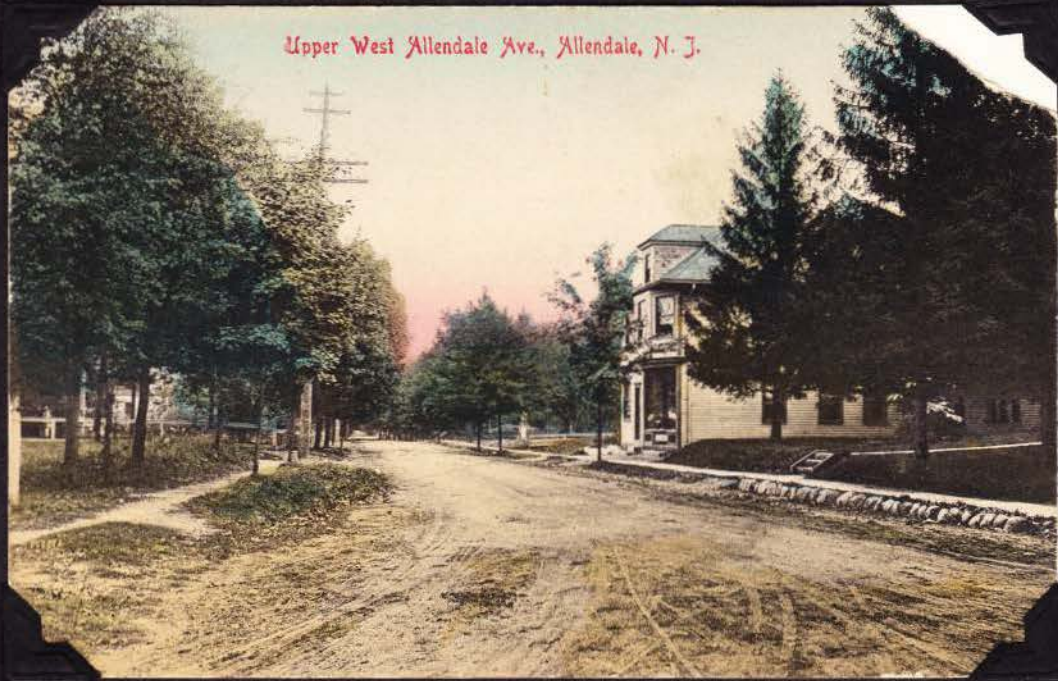


Upper West Allendale Ave., Allendale, N. J.



"Allendale's main street from juncture of Myrtle Avenue looking toward Franklin Turnpike. Building on street was, in 1920, Kornhoff's Bakery. Street was lined with residences. Extreme left is bank site."
----Violet W. Straussman.

This is the view you would have seen about 1910-1915 if you had been standing directly in front of what is today the Allendale Florist Shop, looking toward Franklin Turnpike. The building on the right is the Kornhoff Building, built for William F. Kornhoff probably between 1910 and 1913. This building housed, among other things, Kornhoff's Bakery (a different building, on a different site, housing Kornhoff's Bakery had burned to the ground on December 26, 1909), the Allendale branch of the First National Bank of Ramsey (began receiving deposits on February 9, 1914; closed after approximately one year of business), Allendale's first A & P (circa 1922) and the Allendale Post Office (in 1926). Today this building houses the Garden State Milk Store.

The house on the left, barely visible through the trees, stood on the northeast corner of West Allendale Avenue and Maple Street until about 1929 when the house was moved to its present location at 37 Elm Street. The house, known as the "old Van Blarcom House" (it was probably the home of Stephen J. Van Blarcom, his wife, Eliza Jane, and their daughters, Jennie and Anna) was used as a State Troupers headquarters from June 1924 until February 1927.

The First National Bank of Allendale (now the Allendale branch of Citizen's First National Bank) was constructed in 1925 and opened in December of that year.

The block of stores today located on the north side of West Allendale Avenue stretching east from Maple Street to the Allendale Confectionery Shop was begun in 1948 and the stores were first occupied in 1950.

----Patricia A. Wardell